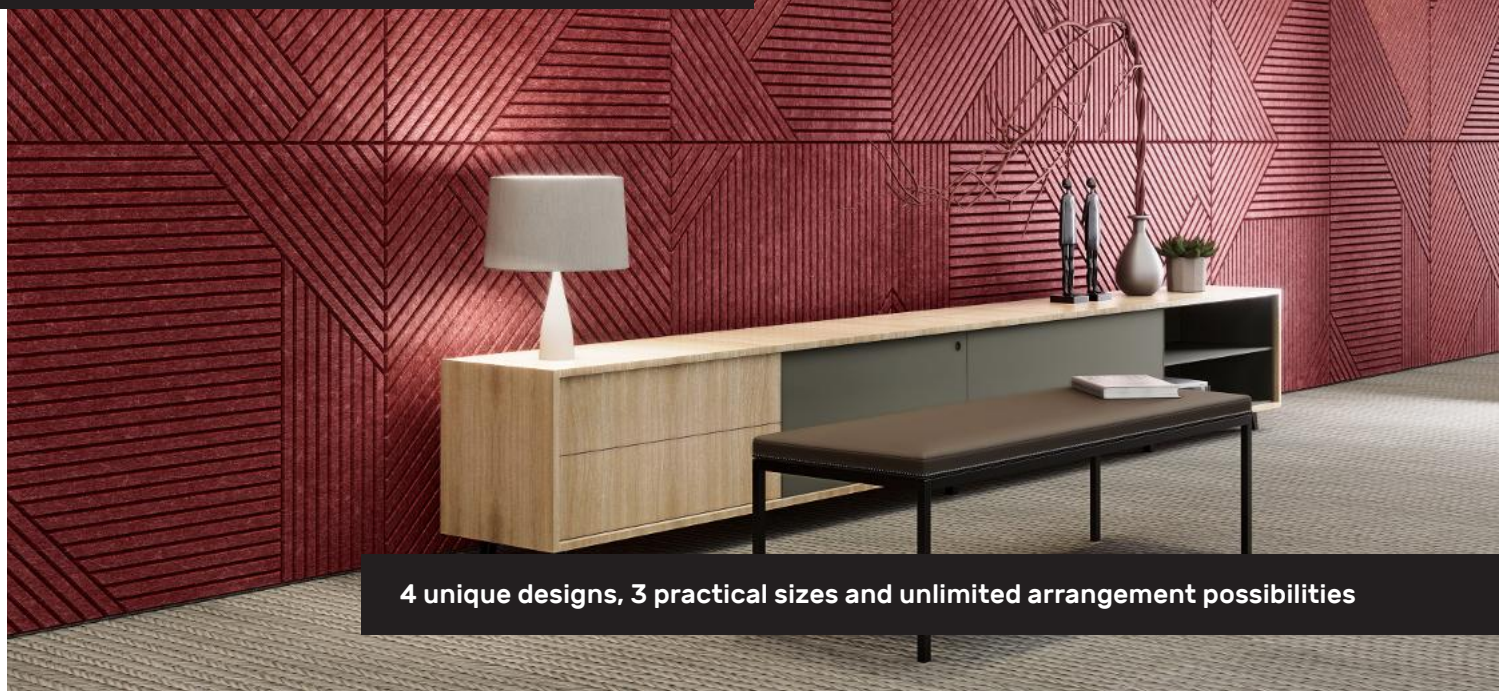


TileScratch - Artistic collection of acoustic panels



4 unique designs, 3 practical sizes and unlimited arrangement possibilities

From the Author:

Inspired by linocut art, the collection features precise lines that form striking geometric patterns. Light and shadow bring the panels to life, creating a dynamic surface that changes throughout the day.

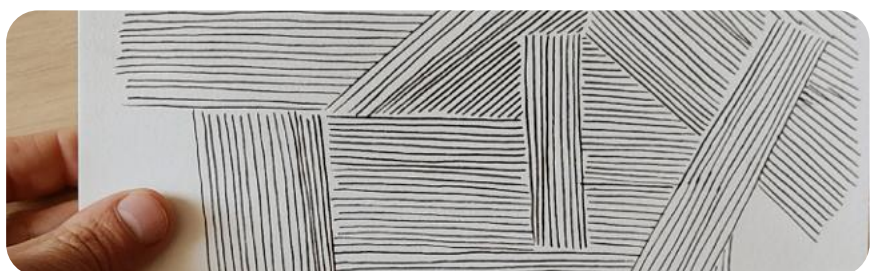
TileScratch panels can be freely arranged into irregular compositions or repeatable patterns, enhancing interiors with unique character and excellent acoustic performance.

This catalog presents selected arrangements to inspire and showcase the collection's full potential. A variety of designs and flexible installation make it easy to create a composition for any space.



with kind regards

Paweł Postuszny



Sizes: Tiles with standard dimensions 300 / 600 / 900 mm

Tile thickness: +/- 12mm

Available colors: According to TileScratch color chart

Cutting method and edge finishing: V-cut

Installation method: Bonding to the wall using mounting adhesive

3D models: Available from distributor

Primary color palette



FD27 Tourmaline



FD28 Slate



FD26 Charcoal



FD80 Ash



FD05 Cream UV



FD45 Smoke



FD59 Mist



FD39 Taupe



FD67 Linen



FD85 Latte



FD57 Hazy Blue



FD16 Denim



FD92 Indigo



FD82 Misty Plum



FD93 Grape



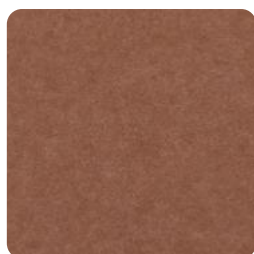
FD87 Blushstone



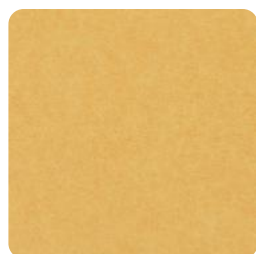
FD06 Sand



FD30 Carmel



FD51 Copper



FD49 Sunshine

Thickness: +/- 12 mm | **Density:** 2400 g/m² | **Composition:** 100% PET polyester (partially recycled)
Sound absorption class: EN ISO 354:2004, EN ISO 11654:1999 α_W - 0,35(H)
Fire classification: EN 13501-1:2018 B-s1, d0 for all product applications

Slight differences in color and texture may occur with multiple orders.

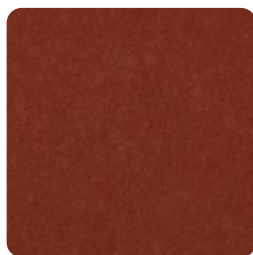
Synthetic felt is a heterogeneous mixture of polyester fibers, so that slight differences in color are a natural characteristic of the material and are no reason for complaint.

The colors shown may vary depending on the characteristics of your screen - we recommend that you visit your dealer to make sure of your final color choice.

Primary color palette



FD75 Orange Clay



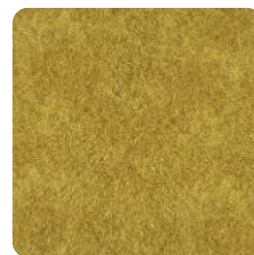
FD52 Pumpkin



FD56 Carmine



FD29 Sage



FY54 Ochre



FD90 Velvet Night



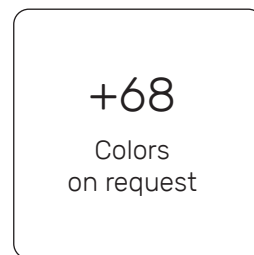
FD34 Malachite



FD71 Eucalyptus



FD61 Aurora



+68
Colors
on request

UV Printing - Only on FD05 Cream



Rustic Groove



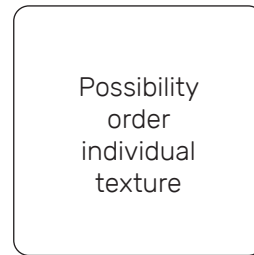
Oak Impressions



Classic Woodland



Evoke oak



Possibility
order
individual
texture

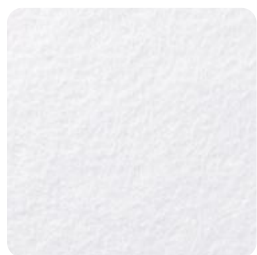
Thickness: +/- 12 mm | **Density:** 2400 g/m² | **Composition:** 100% PET polyester (partially recycled)
Sound absorption class: EN ISO 354:2004, EN ISO 11654:1999 αW - 0,35(H)
Fire classification: EN 13501-1:2018 B-s1, d0 for all product applications

Slight differences in color and texture may occur with multiple orders.

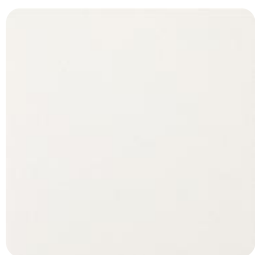
Synthetic felt is a heterogeneous mixture of polyester fibers, so that slight differences in color are a natural characteristic of the material and are no reason for complaint.

The colors shown may vary depending on the characteristics of your screen - we recommend that you visit your dealer to make sure of your final color choice.

Colors on request



FD04 Snowlake



FD44 Alabaster



FD79 Cloud



FD07 Pearl



FD73 Opal



FD74 Marble



FD11 Frost



FD10 Silver



FD36 Fog



FD38 Iron



FD09 Dove



FD78 Steel



FD12 Dust



FD25 Pewter



FD70 Shadow



FD63 Sky Blue



FD42 Frosted Blue



FD95 Blue Stone



FD84 Twilight



FD47 Midnight



FD23 Cornflower



FD33 Lagoon



FD54 Bluebird



FD22 Azure



FD37 Baby Blue

Thickness: +/- 12 mm | **Density:** 2400 g/m² | **Composition:** 100% PET polyester (partially recycled)
Sound absorption class: EN ISO 354:2004, EN ISO 11654:1999 $\alpha_W - 0,35(H)$
Fire classification: EN 13501-1:2018 B-s1, d0 for all product applications

Slight differences in color and texture may occur with multiple orders.

Synthetic felt is a heterogeneous mixture of polyester fibers, so that slight differences in color are a natural characteristic of the material and are no reason for complaint.

The colors shown may vary depending on the characteristics of your screen - we recommend that you visit your dealer to make sure of your final color choice.

Colors on request



FD65 Arctic Blue



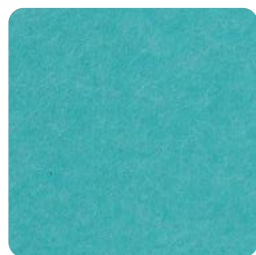
FD41 Celeste



FD21 Atlantis



FD20 Cerulean



FD35 Turquoise



FD96 Peacock



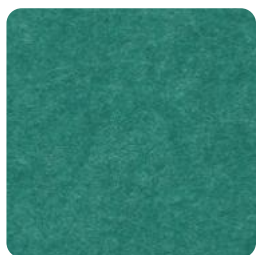
FD24 Aquamarine



FD40 Rainforest



FD68 Agate



FD15 Viridian



FD94 Teal



FD72 Fern



FD14 Lime



FD53 Grass



FD32 Seaweed



FD31 Avocado



FD13 Pistachio



FD88 Moss



FD81 Willow



FD89 Olive



FD58 Marshland



FD62 Goldenrod



FD86 Coyote



FD66 Agarwood



FD83 Camouflage

Thickness: +/- 12 mm | **Density:** 2400 g/m² | **Composition:** 100% PET polyester (partially recycled)
Sound absorption class: EN ISO 354:2004, EN ISO 11654:1999 $\alpha_W - 0,35(H)$
Fire classification: EN 13501-1:2018 B-s1, d0 for all product applications

Slight differences in color and texture may occur with multiple orders.

Synthetic felt is a heterogeneous mixture of polyester fibers, so that slight differences in color are a natural characteristic of the material and are no reason for complaint.

The colors shown may vary depending on the characteristics of your screen - we recommend that you visit your dealer to make sure of your final color choice.

Colors on request



FD91 Soil



FD08 Dark Brown



FD64 Burgundy



FD18 Wine



FD69 Ruby



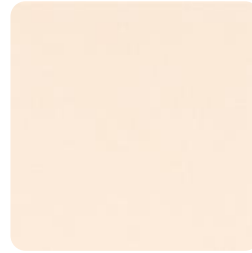
FD17 Scarlet



FD60 Red Velvet



FD03 Clementine



FD01 Pale Gold



FD46 Candy



FD77 Orchid



FD48 Eggplant



FD76 Blackberry



FD19 Wisteria



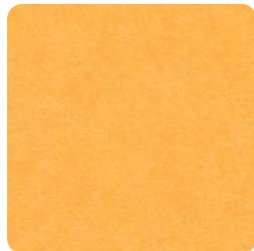
FD55 Neon Green



FD43 Neon Yellow



FD02 Dandelion



FD50 Marigold

Minimum order of one color from the custom palette: 10 plates

Waiting time for material: from 8 to 10 weeks (from 3 to 4 weeks in accelerated mode, extra charge)

Thickness: +/- 12 mm | **Density:** 2400 g/m² | **Composition:** 100% PET polyester (partially recycled)

Sound absorption class: EN ISO 354:2004, EN ISO 11654:1999 α_W - 0,35(H)

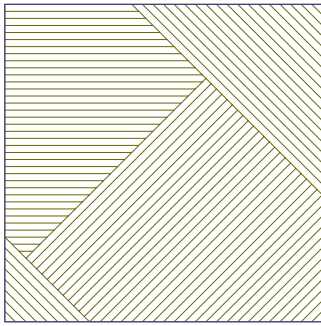
Fire classification: EN 13501-1:2018 B-s1, d0 for all product applications

Slight differences in color and texture may occur with multiple orders.

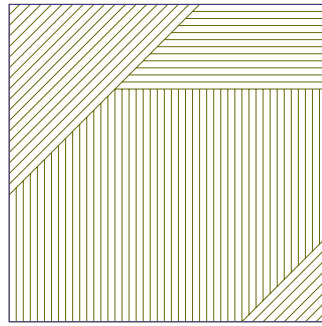
Synthetic felt is a heterogeneous mixture of polyester fibers, so that slight differences in color are a natural characteristic of the material and are no reason for complaint.

The colors shown may vary depending on the characteristics of your screen - we recommend that you visit your dealer to make sure of your final color choice.

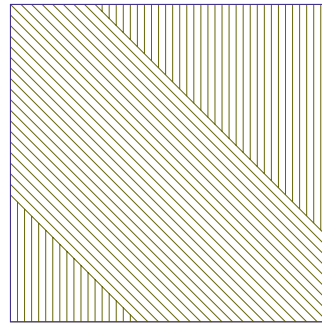
TS90_A



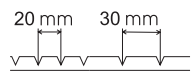
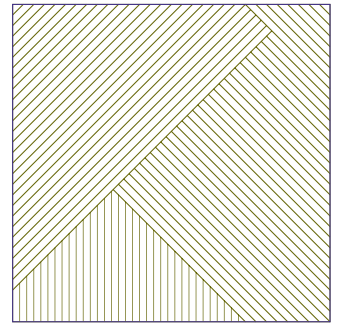
TS90_B



TS90_C

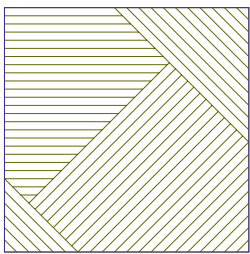


TS90_D

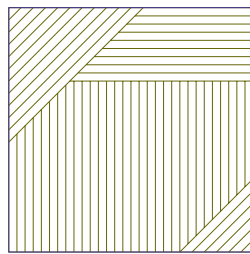


Panel size 900 x 900 x 12mm.

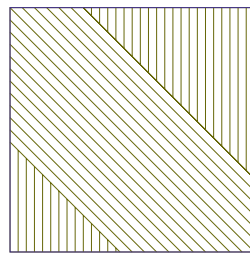
TS60_A



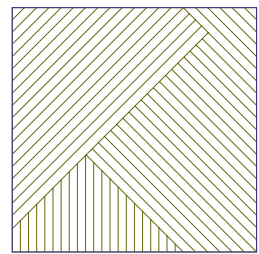
TS60_B



TS60_C



TS60_D

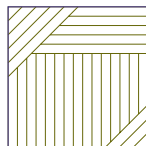


Panel size 600 x 600 x 12mm.

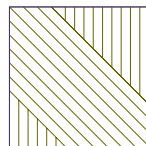
TS30_A



TS30_B



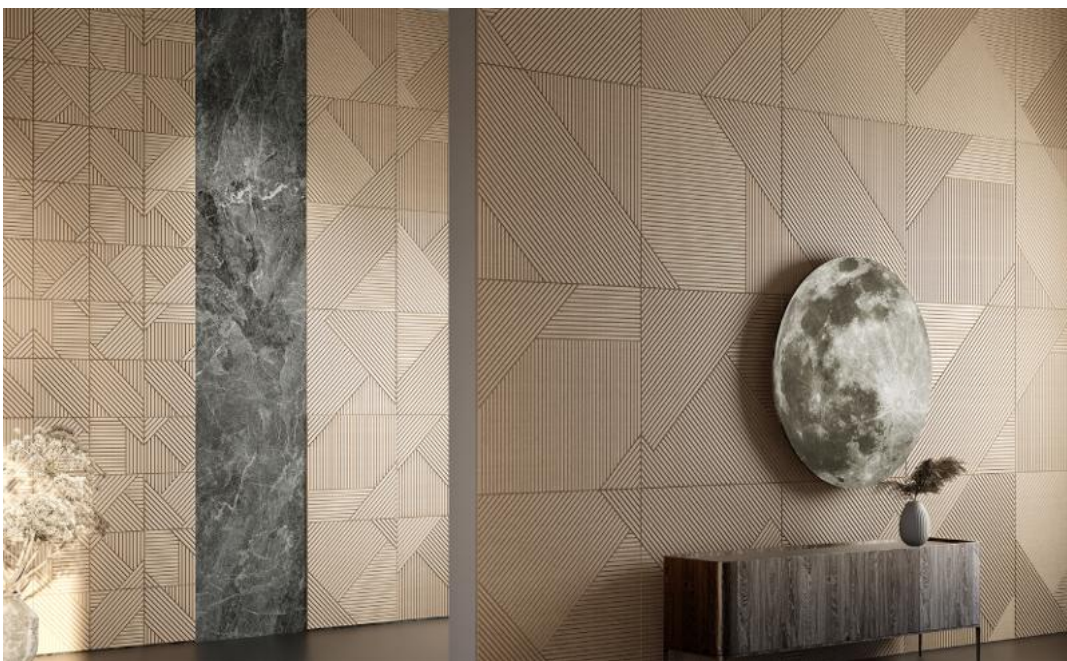
TS30_C



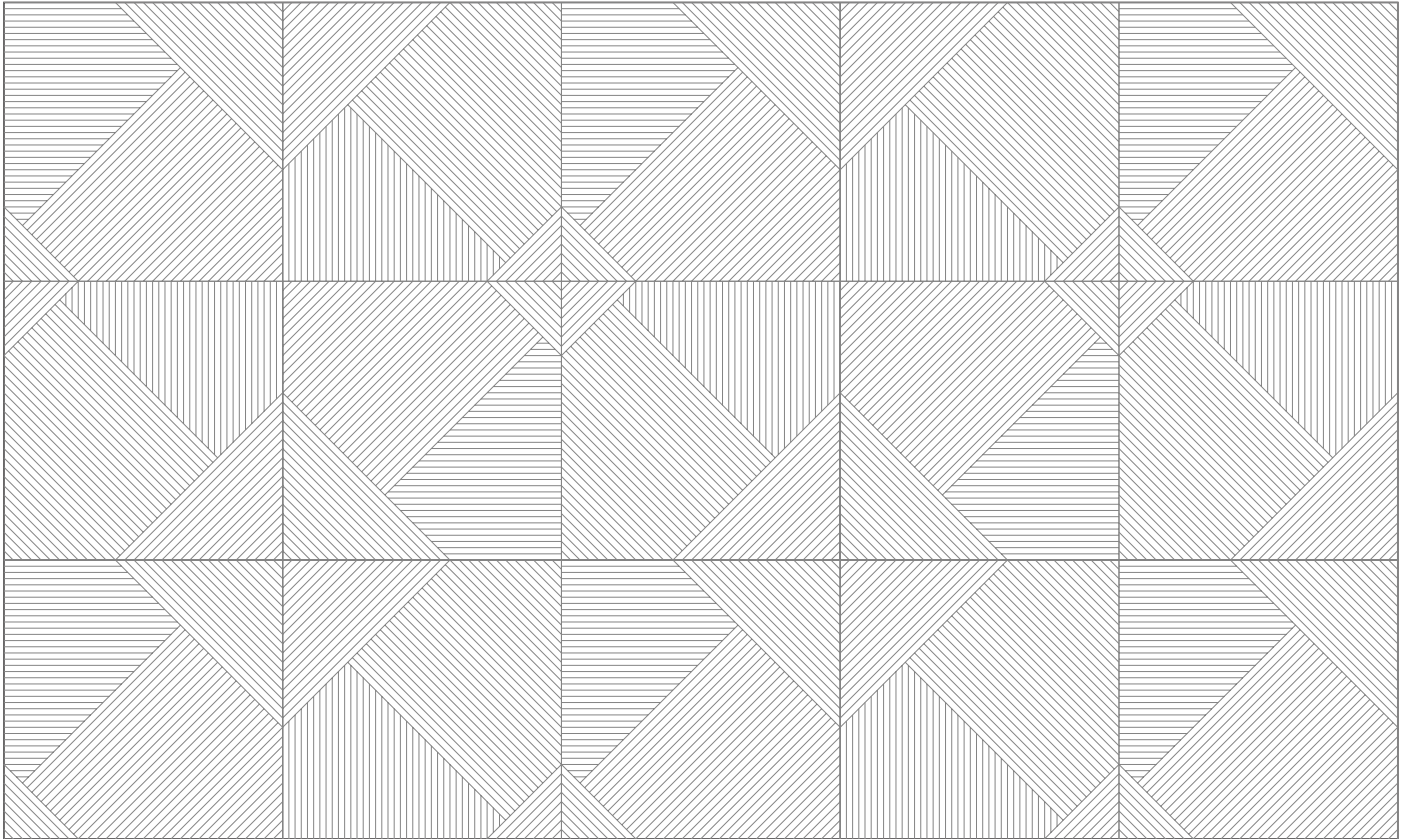
TS30_D



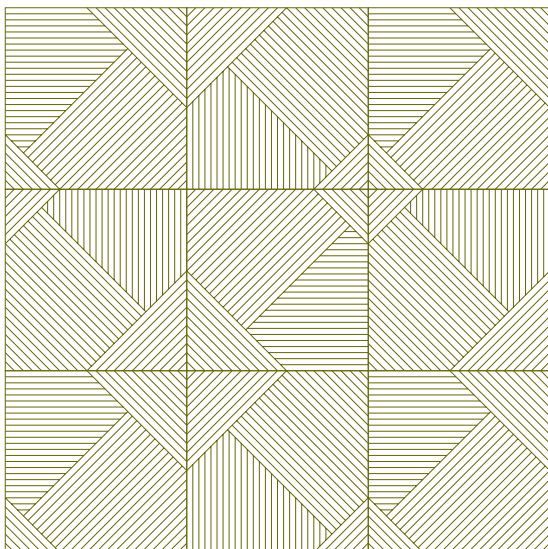
Panel size 300 x 300 x 12mm.



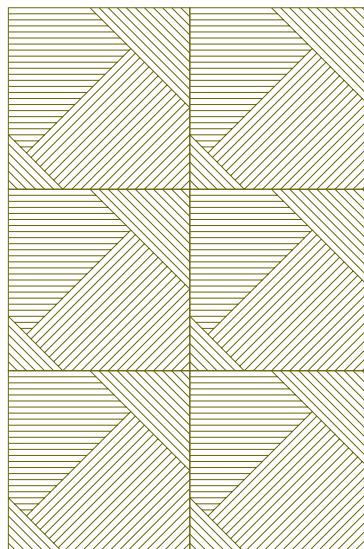
TS90_A x 15



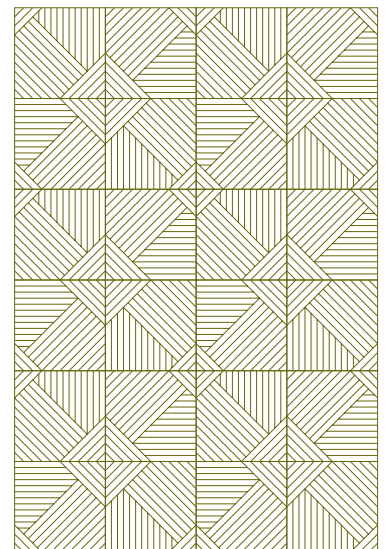
TS60_A x 9



TS60_A x 6



TS30_A x 24



TS90_A

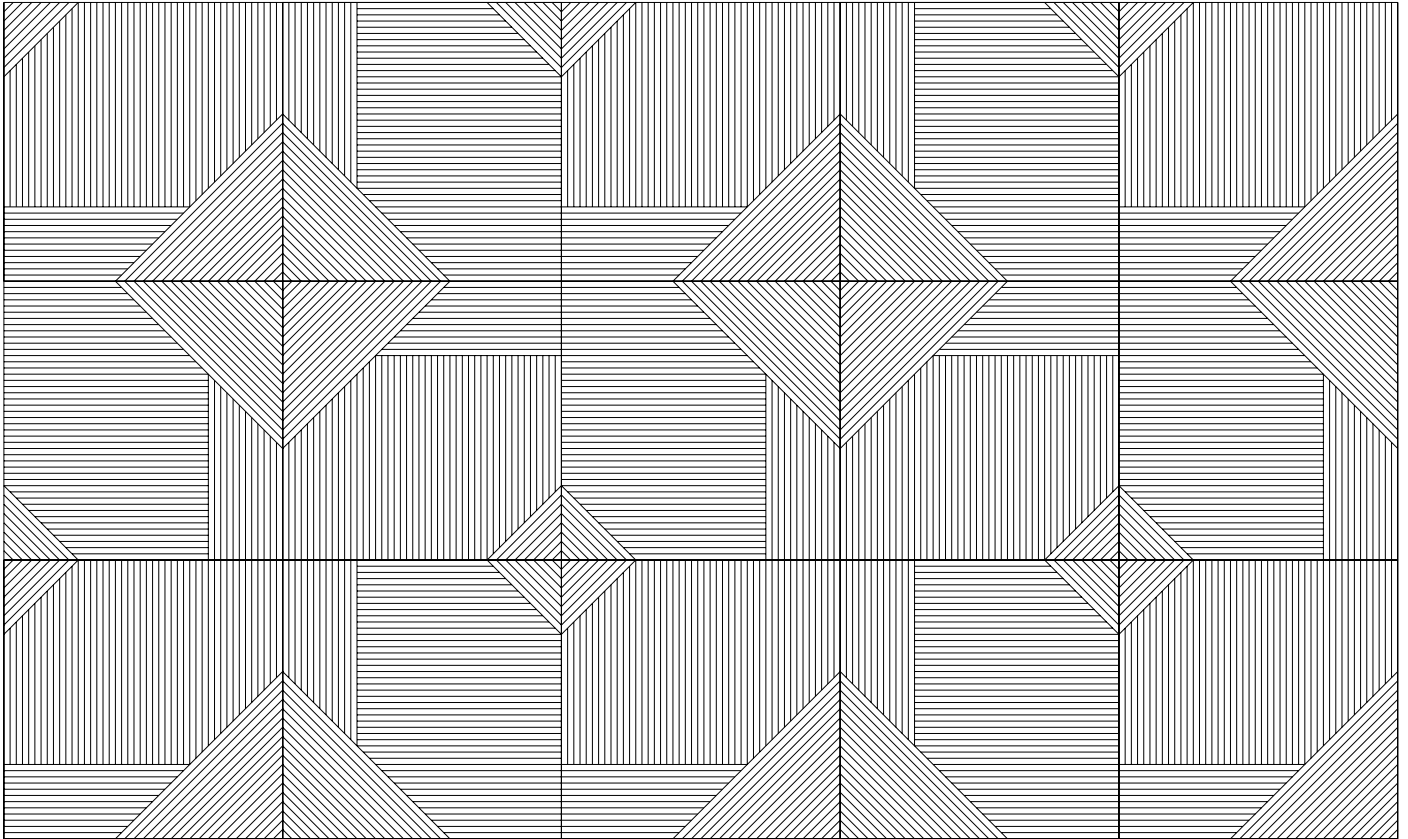


TS60_A

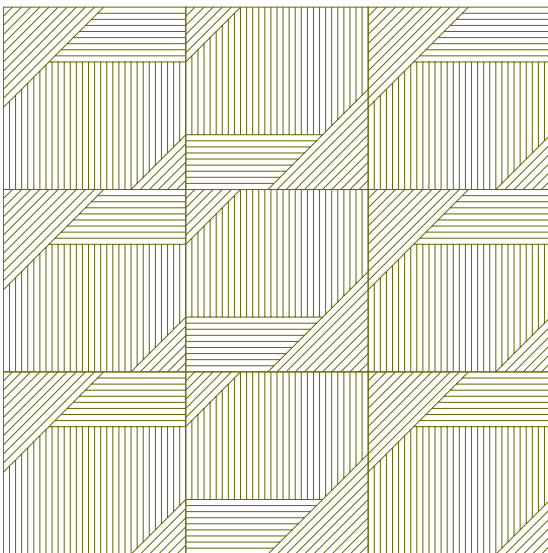
TS30_A



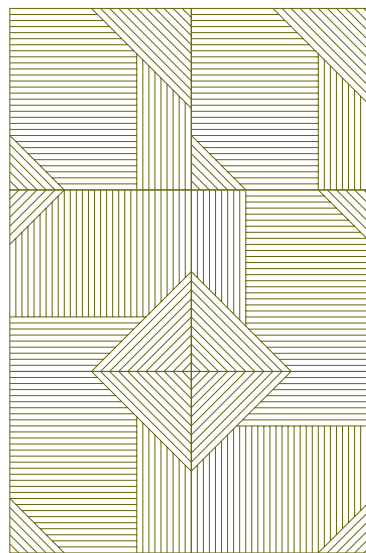
TS90_B x 15



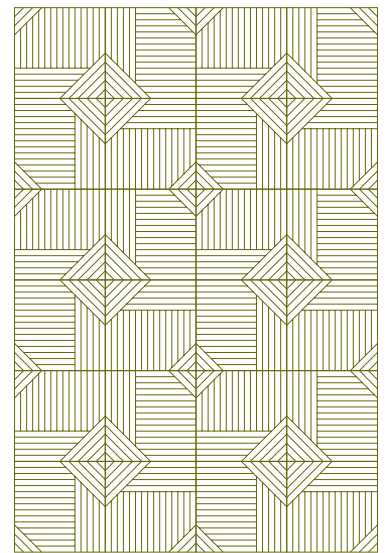
TS60_B x 9



TS60_B x 6



TS30_B x 24

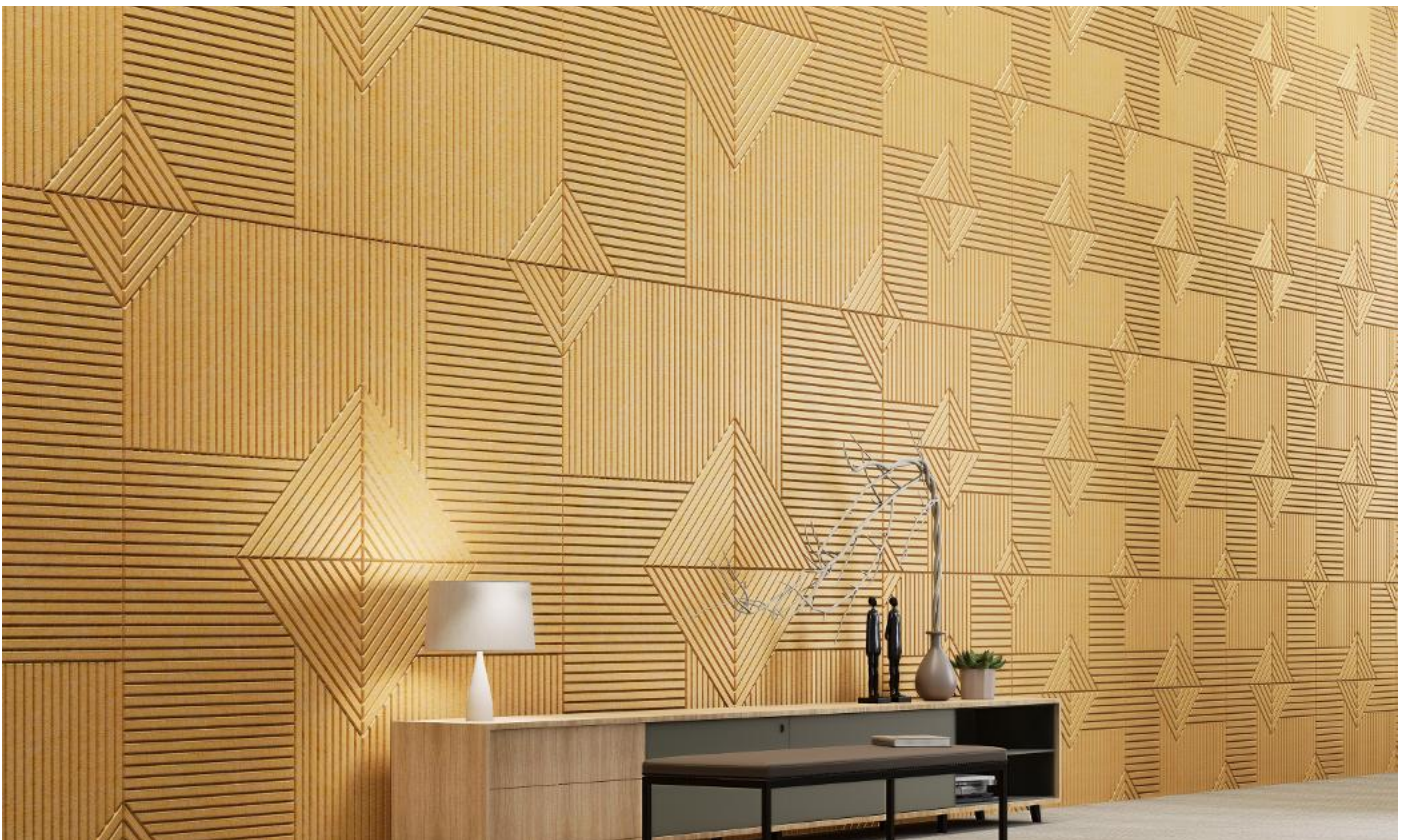


TS90_B

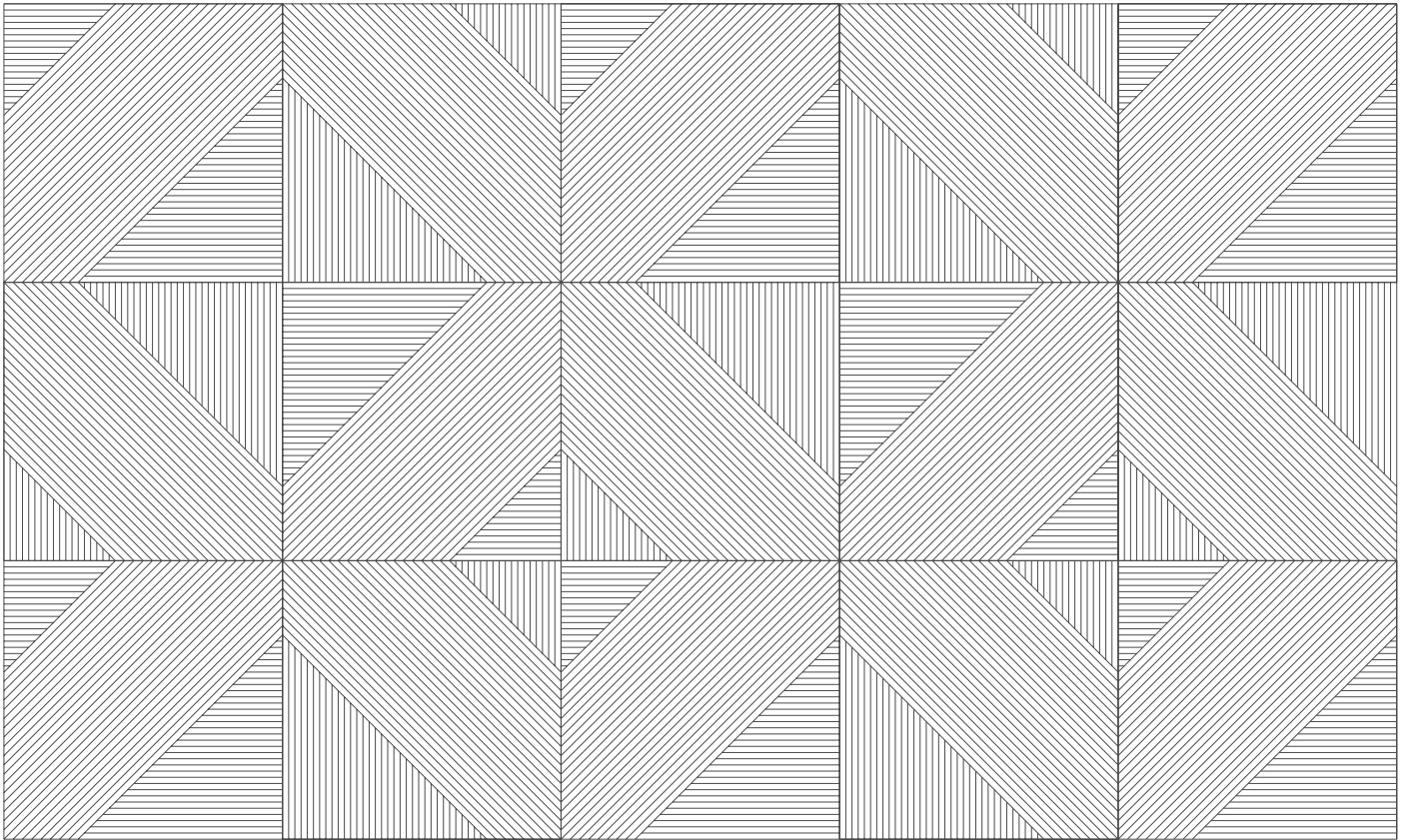


TS60_B

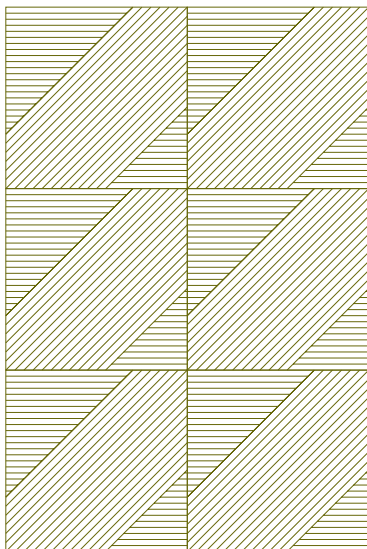
TS30_B



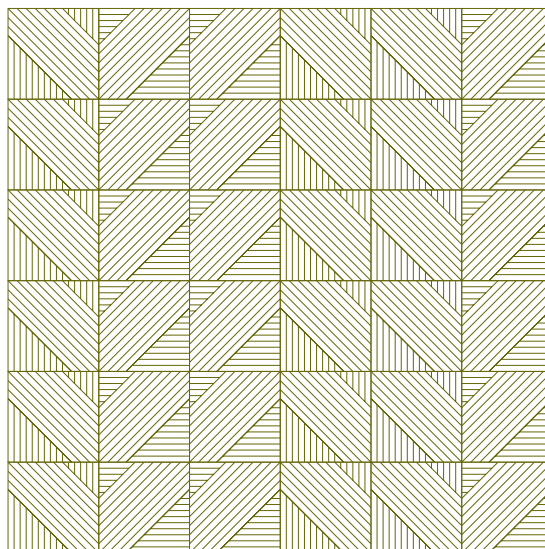
TS90_C x 15



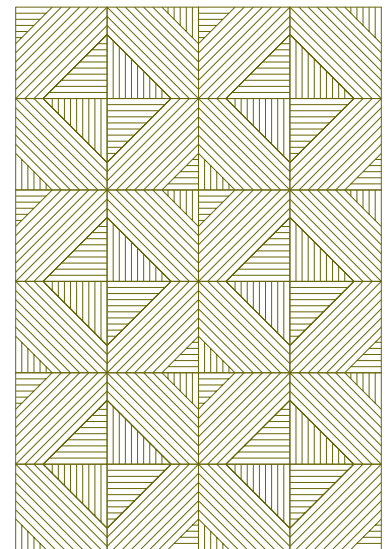
TS60_C x 6



TS30_C x 36



TS30_C x 24



TS90_C

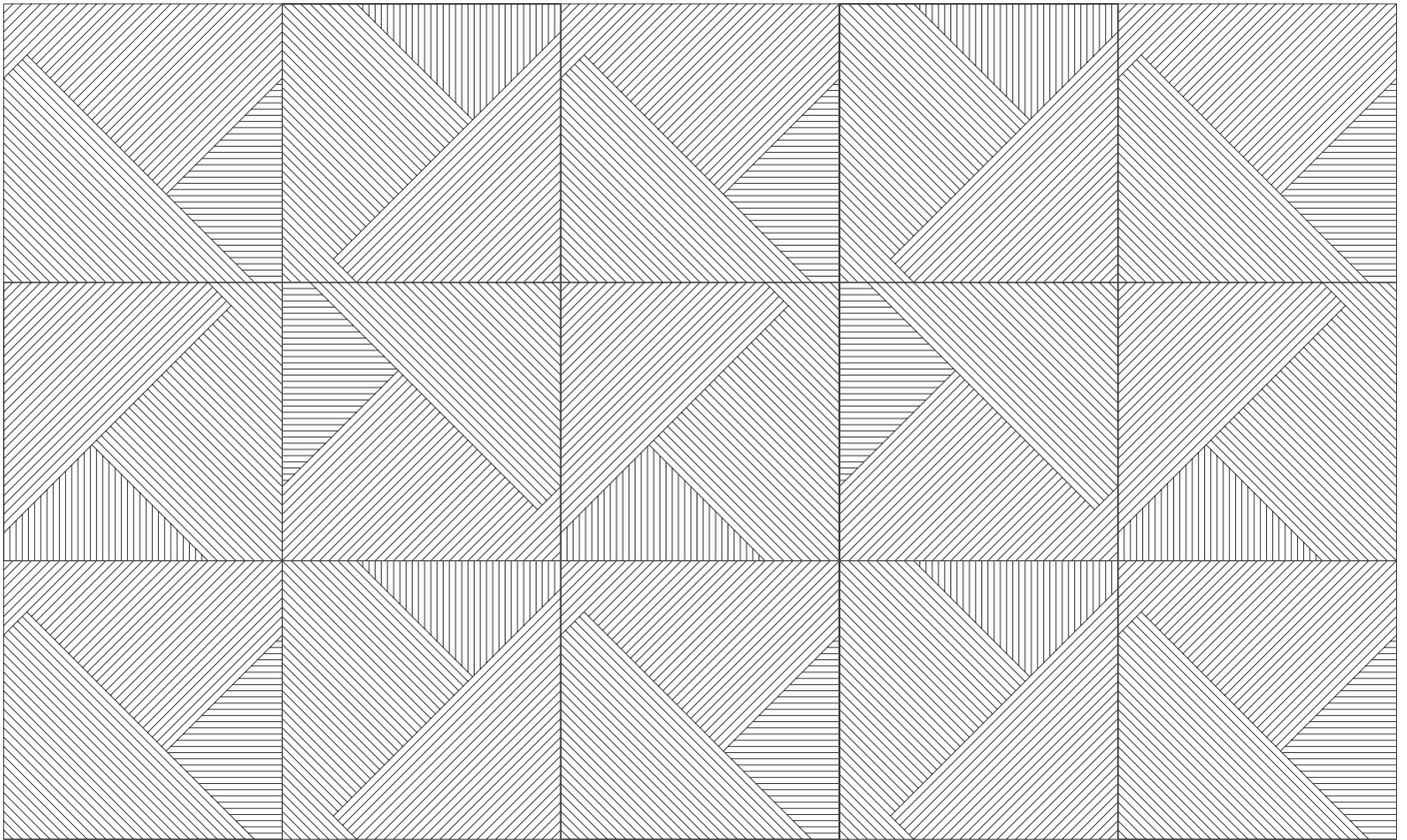


TS30_C

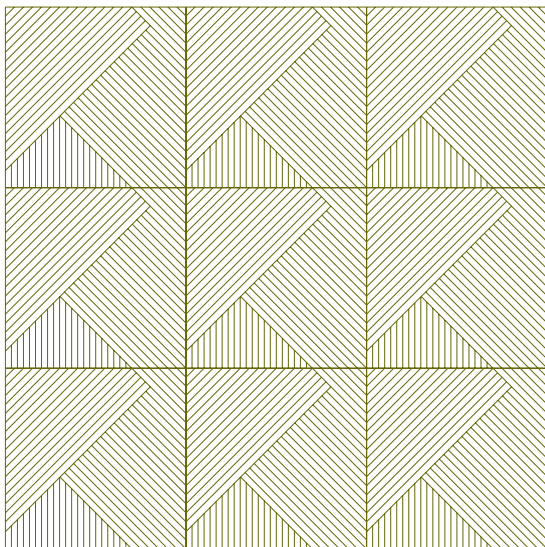
TS60_C



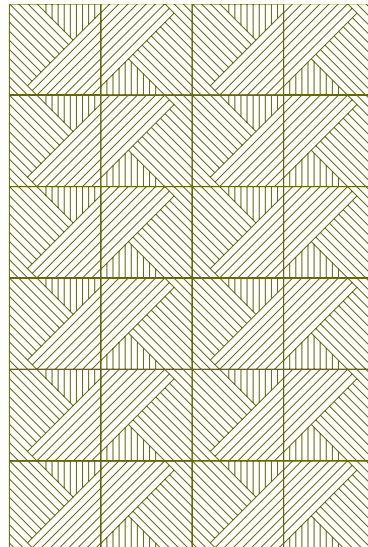
TS90_D x 15



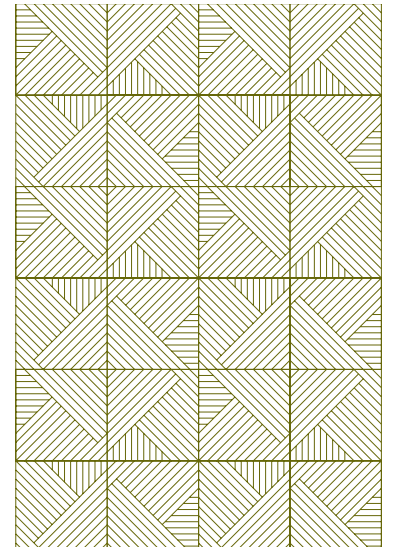
TS30_D x 9



TS30_D x 24



TS30_D x 24



TS90_D



TS60_D

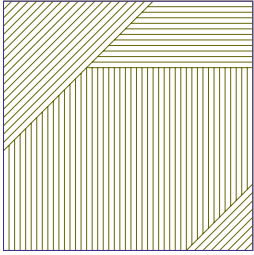
TS30_D



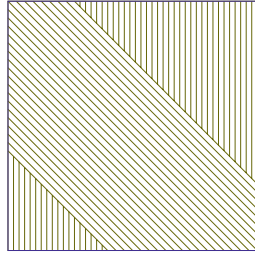
TileScratch - Example compositions - Mix

Thanks to the possibility of any combination of patterns and sizes, you will create unique compositions
(Presentation videos available under the QR code on the cover). Models 3D is also available from distributors.

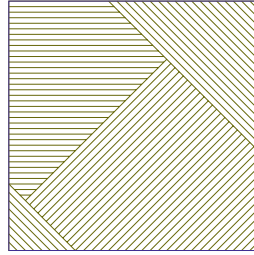
TS90_B



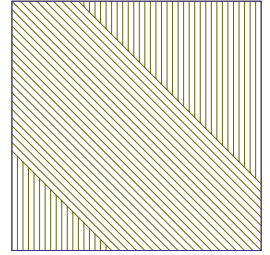
TS90_C



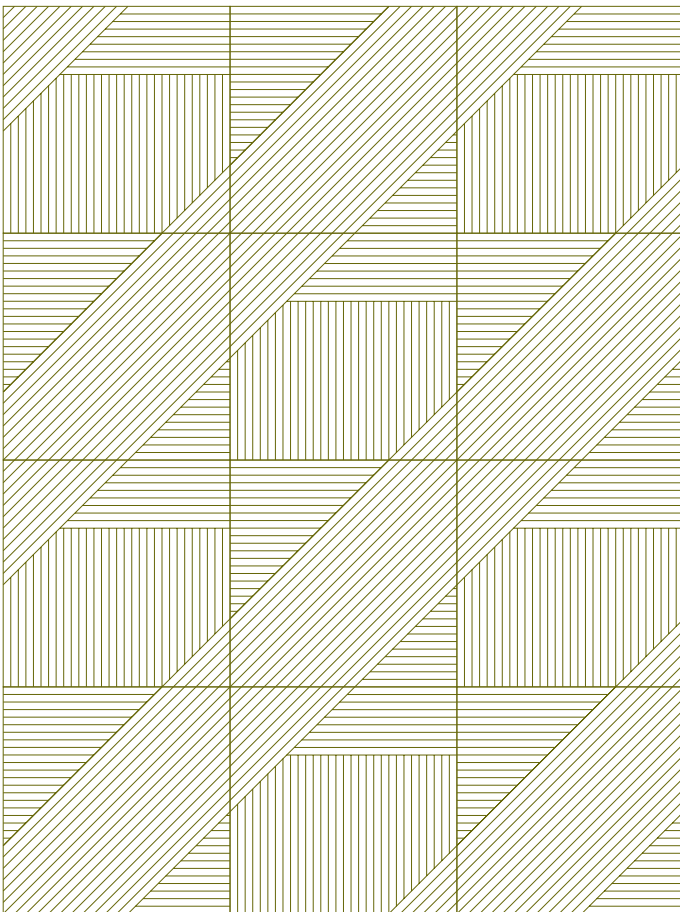
TS90_A



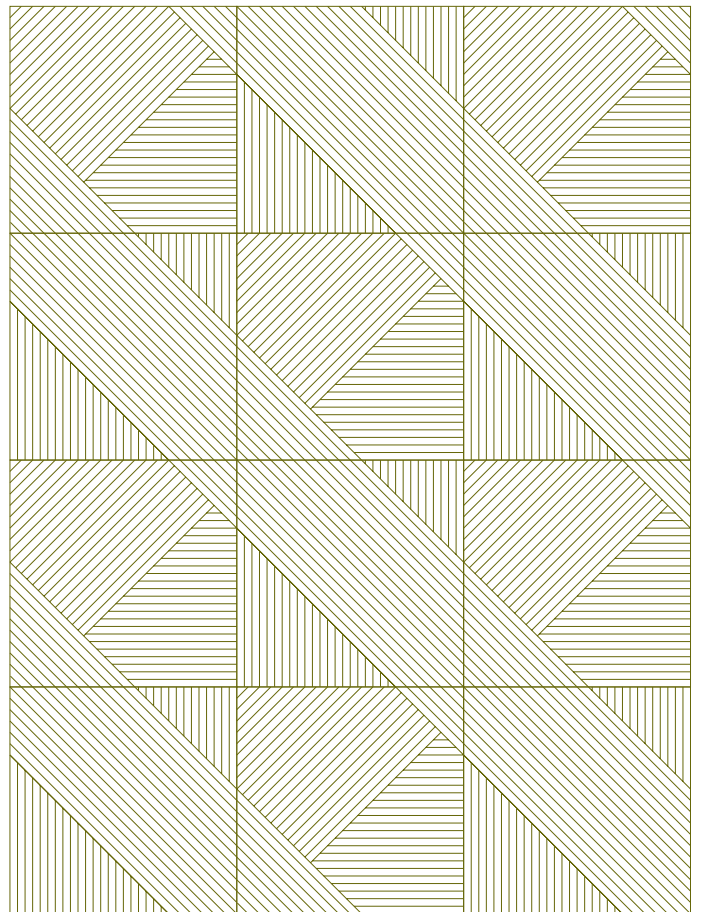
TS90_C



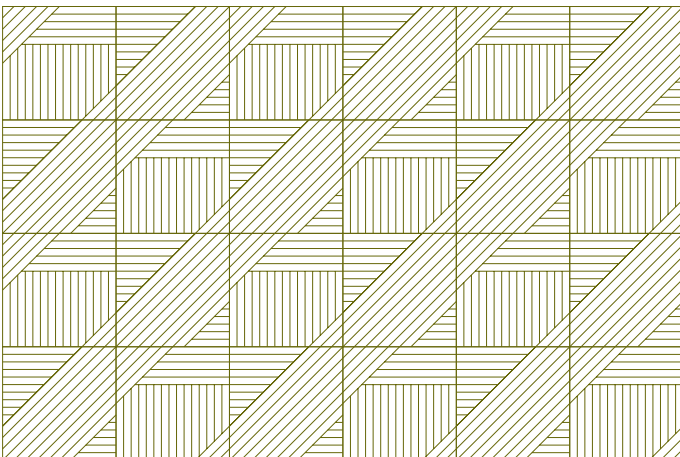
TS60_B x 6 + TS60_C x 6



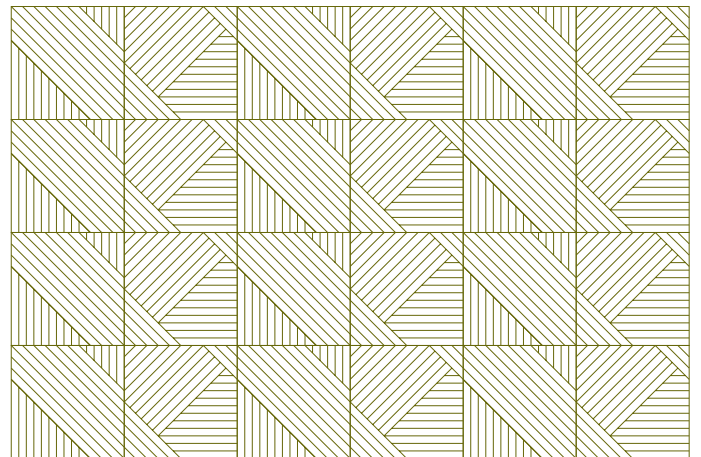
TS60_A x 6 + TS60_C x 6



TS30_B x 12 + TS30_C x 12

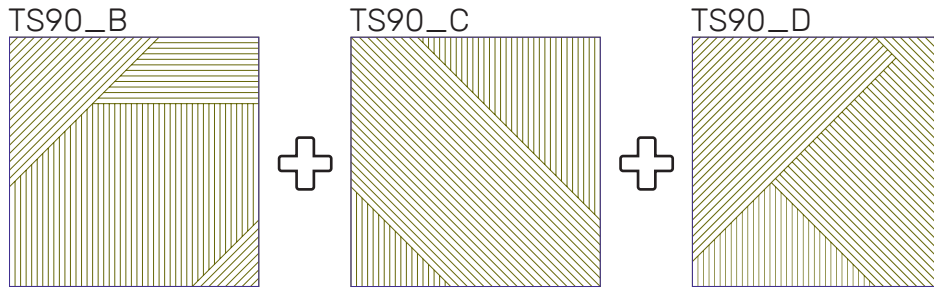


TS30_A x 12 + TS30_C x 12



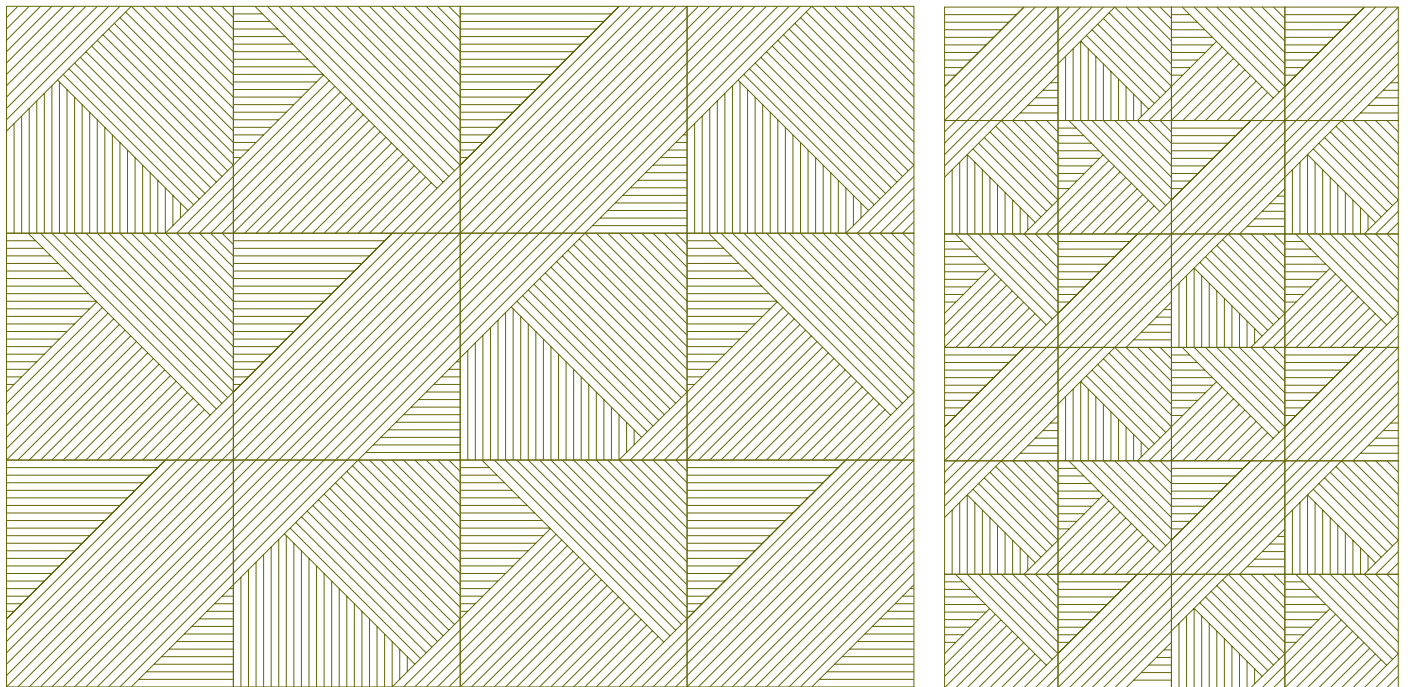
TileScratch - Example compositions - Mix

Thanks to the possibility of any combination of patterns and sizes, you will create unique compositions
(Presentation videos available under the QR code on the cover). Models 3D is also available from distributors.



TS60_C x 4 + TS60_A x 4 + TS60_D x 4

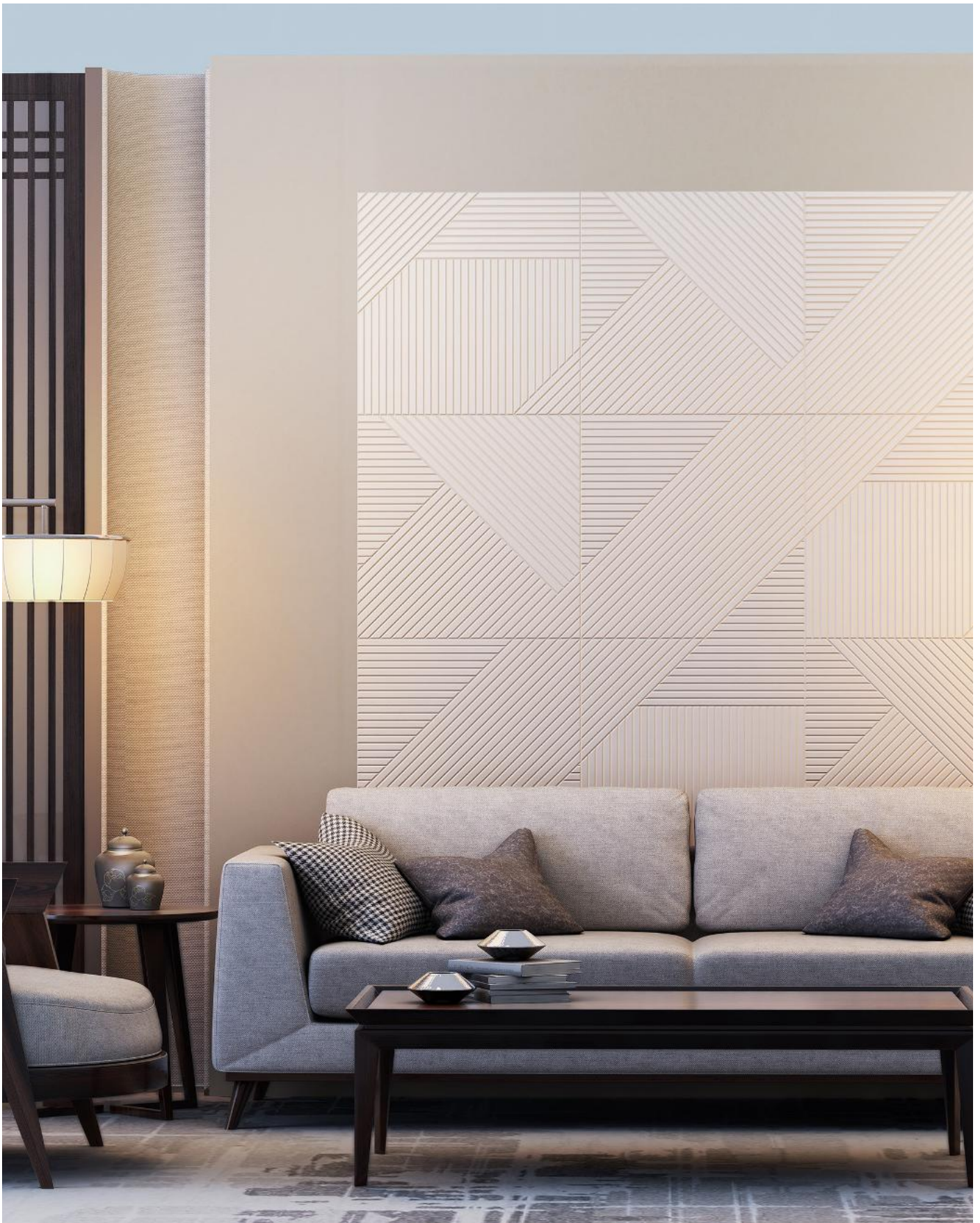
TS30_C x 8 + TS30_A x 8 TS30_D x 8



TileScratch - Example compositions - Mix

feltdecor®
t.line

Thanks to the possibility of any combination of patterns and sizes, you will create unique compositions
(Presentation videos available under the QR code on the cover). Models 3D is also available from distributors.





Authorized dealer:

